

GREENLAND *Collector*

Subscription magazine for collectors of Greenland stamps • Vol. 20 • No. 2 • April 2015



3

HM The Queen turns 75 years
on 16th April 2015



4

Definitive series - Two new
denominations featuring
HM The Queen's portrait



5

EUROPA - Stamps 2015
- Old Toys



8

2015 Sepac stamp - Gaypride



POST
GREENLAND

The 2014 'Greenlandic stamp of the year' has been elected

By Hjørdis Viberg

The winning 2014 'Greenlandic stamp of the year' was the round stamp with the polar bear illustration, entitled 'Pole-to-Pole' (G547). The stamp was issued on 20th October 2014 and it was a joint issue in collaboration with New Zealand Post.

The scientist Olivier Gilg took the photo of the polar bear depicted on the stamp. Olivier Gilg was born in



1967 in France, has a PhD and is an Associate Researcher at the University of Burgundy, Dijon, France.

The photo of the polar bear was taken a few meters away from his tent on the remote island of Henrik Kroyer Holme (North Greenland) in 2007, while he and his team were studying the largest colony of the endangered Ivory Gull known in Greenland.

Stamp collectors from all over the world voted for their favourite among the 24 stamps issued by POST Greenland in 2014 and the winner of the DKK 10,000 main prize chosen in the draw was Christian T. Hansen of Denmark.

The ten lucky runner-up winners all receive a 2014 Year Pack. They are:

- Ralf-Sigurd Katz, Germany
- Hugo Zwakhoven, Germany
- Charles Schrauth, USA
- Anne MacEneaney, Ireland
- Léonard-Pierre Closuit, Switzerland
- Bent Larsen, Denmark
- Claus Hansen, Denmark
- Sannie Andersen, Denmark
- David Heckman, USA
- K. Jensen, Australia

POST Greenland sends all the lucky winners their warmest congratulations.

The competition for the 2014 'Greenlandic stamp of the year' ran from 1st December 2014 to the 1st March 2015. The competition was held through POST Greenland's collector's magazine Greenland Collector, on www.stamps.gl and on www.facebook.com/stamps.gl.



Our new office trainee, Emanuel Nuko, draws the names of the winners of the main prize plus the additional prizes. On the right is administration manager Hjørdis Viberg. Photo: POST Greenland

Her Majesty the Queen's 75th birthday on 16th April 2015

By Per Svendsen, Managing Director

It is with great honour that POST Greenland presents a large, commemorative stamp which was issued on 16th April on the occasion of Her Majesty the Queen's 75th birthday.

The portrait photograph of Her Majesty wearing Greenlandic national costume was taken by the court photographer Steen Brogaard. The session took place in the royal apartments at Amalienborg Palace.

There is a genuine and sincere bond between the royal house and the people of Greenland. The bond is very deep. Many up here in Greenland still remember the Queen's parents, King Frederik IX and Queen Ingrid and their sincere commitment towards Greenland.

About our Queen

Margrethe Alexandrine Porhildur Ingrid, Her Majesty the Queen, became Queen of Denmark in 1972. H.M. Queen Margrethe II was born on 16th April 1940 at Amalienborg Palace, Copenhagen.

In the period 1946-1955 the Queen attended Public school at the School of Zahle and as a private student at Amalienborg Palace from 1946 to 1949. During the period 1955-1956 the queen attended North Foreland Lodge boarding school in Hampshire, England.

On 10th June 1967 the Queen married Henri Marie Jean André Count de Laborde de Monpezat, who, by this marriage, became HRH Prince Henrik of Denmark. The Royal couple's two sons HRH Crown Prince Frederik André Henrik Christian and HRH Prince Joachim Holger Waldemar Christian were born on 26th May 1968 and 7th June 1969.

The Queen has, since 1970, worked actively with a variety of artistic expressions: painting, church textiles, water colours, graphics, book illustrations, decoupage, set design and embroidery. The Queen has also created chasubles for Fredensborg Palace Chapel in 1976, Kronborg Castle Church and Tasilaq church,

both the later in 1985. The Queen also designed the Greenlandic Christmas seal in 1983.

The Queen and Greenland

The first time the Queen visited Greenland was in 1960 in the capacity as the heir to the Throne. Since then, the Queen has made countless visits to Greenland all with joy and mutual respect. HM The Queen has a special place in the heart of Greenlanders. HM The Queen is known for her many Greenland visits to town and settlements on the westcoast, the eastcoast, and in northern Greenland. Besides the above mentioned orphanage in Tasilaq, Princess Margaret School in Upernavik was also named after our regent.

Especially on two occasions it has been a great honour to host a royal visit by HM The Queen. The first occasion was on 1 May 1979 when she handed over the Home Rule Act to the then Chairman of the Greenland Parliament, Mr. Lars Chemnitz on the day of Home Rule introduction in Greenland. The other occasion was in the same Parliament when she handed over the Self-government Act to the then Chairman of the Greenland Parliament, Mr. Josef Motzfeldt, on 21 June 2009.

The well-being of Greenlandic children holds a very special place in the Queen's heart; she is patron of the Association of Greenlandic children. The Association of Greenlandic children is independent of political and economic interest and receives no public funding. The work of the Association is based solely on a large group of committed members and contributions from foundations and endowments as well as businesses.

Due to the above mentioned interests and connections, there are obvious reasons why the Queen and the rest of the royal house are and will continue to be a natural focal point for modern Greenland.



01100557

Queen Margrethe II - 75 Years

Value: DKK 23.50

Date of issue: 16th April 2015

40 stamps per sheet

Exterior dimensions: 28.80 x 40.00 mm

Format: G - vertical

Photographer: Steen Brogaard

Typography: Lowe-Martin Group

Printing Method: Offset

Paper: TR4



Photo: Steen Brogaard ©

Court photographer Steen Brogaard

Since 1992, Steen Brogaard has served firstly as HRH Crown Prince Frederik's and, later, as HRH Prince Joachim's personal photographer for both private and official occasions. This work has over the years led to many trips, exhibitions, books and not to mention countless entries in Danish and foreign magazines. Steen Brogaard is also the photographer responsible for the parliamentary official portraits and today he works with both commercial and personal projects in his studio on the island Refshaleøen in Copenhagen. Read more about Steen Brogaard on www.brogaard.com.

Definitive Stamps Series – Two new denominations bearing Her Majesty the Queen's portrait

By Per Svendsen, Managing Director



Per Svendsen

In October 2012 the long-awaited reprint of the definitive series featuring Her Majesty the Queen's portrait was issued with the add on values DKK 0.50 and DKK 1.00. On 21st October 2013 the stamp was issued with the denomination DKK 10.00. With G563 and G564 the series now continues with two new denominations, DKK 5.00 and DKK 20.00.

The first Greenlandic definitive series was issued in 1938 when the then monarch, King Christian X, was depicted on stamp. In 1950 his son and successor, King Frederik IX, was portrayed on the next definitive series. Our present definitive series, which started in 2012, is our sixth definitive series portraying HM The Queen, since 1973, when our beloved monarch was first depicted on a Greenland stamp.

To celebrate the HM The Queen's 50th birthday in 1990, the then Greenland Home Rule named an approximately 4,500 sq.km. area by Ittoqqortoormiit (Scoresbysund), East Greenland "Queen Margrethe II's Land". The area lies off the Greenland Sea.

In Tasilaq - 32 years before POST Greenland's stamp department Filatelia was founded in the city - Princess Margrethe's Orphanage was inaugurated on 17th September 1957 by the Association to assist Greenlandic children, as the fifth and last of the children sanatoriums. Princess Margrethe's Orphanage is, still today, an extremely well-liked institution in our city.



01100563
Definitive series, 2015 1/2
Value: DKK 5.00
Date of issue: 13th May 2015
40 stamps per sheet
Exterior dimensions: 28.50 x 40.00 mm
Format: G - Vertical
Photographer: Steen Brogaard
Engraver: Martin Möck
Printing Method: Intaglio and Offset
Paper: Swiss Stamp Paper

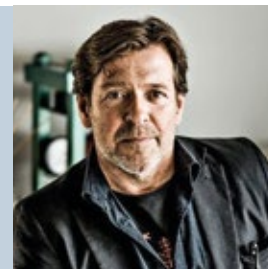


01100564
Definitive series, 2015 2/2
Value: DKK 20.00
Date of issue: 13th May 2015
40 stamps per sheet
Exterior dimensions: 28.50 x 40.00 mm
Format: G - Vertical
Photographer: Steen Brogaard
Engraver: Martin Möck
Printing Method: Intaglio and Offset
Paper: Swiss Stamp Paper



About the Norwegian artist

Martin Möck was born on 8th June 1955 in Gothenburg, Sweden into a family of artists; his mother a textile artist and his father a graphic designer. In 1975, after studying art, he became an apprentice as an engraver under Arne Wallhorn at the Swedish postal service. Since then, Möck has had more than 600 of his engravings issued as postage stamps, primarily for the postal services of the Nordic countries, but also for the postal services of France, Monaco, Canada and others. About his visit to Greenland, he says: *"Coming to Greenland, the island in the north, to the west of Iceland, is a dream, which became reality for two weeks in August 2000 when I first visited Tasilaq and the hinterland. I have engraved many stamps for Greenland and so it was a good idea to experience how it really looks there. What colors are available, how is the light, the air, the water. A helicopter ride gives a first impression of what is yet to come - brown-turquoise crystal clear air"*. See also www.martinmoeck.com.



EUROPA – Stamps 2015 - Old toys

By Peder Friis Sørensen

This year's two *EUROPA* stamps were created by the artist Bolatta Silis-Hoegh. This is now the fifth time that this young and very versatile artist has created designs for Greenlandic stamps.

Old game as a game of the presence

By Bolatta Silis-Høegh

'Pulaartut' is a mind game and still today one of the most famous string games in Greenland. One figure has to visit the other without the string being untied.

A challenge, both today and in previous times. Despite this concept being centuries old, 'Pulaartut' is still produced in Greenland.

It is nice to see that children still play the same games as in times past. Only the material has changed. The woden figures are painted in the colours seen in the West Greenlandic National Costume and were made in the 1950's.



01100558

EUROPA Old toys 1/2

Value: DKK 12.50

Date of issue: 13th May 2015

40 stamps per sheet

Exterior dimensions: 40.00 x 28.80 mm

Format: G - horizontal

Artist: Bolatta Silis-Høegh

Typography: Lowe-Martin Group

Printing Method: Offset

Paper: TR4



01100559

EUROPA Old toys 2/2

Value: DKK 14.00

Date of issue: 13th May 2015

40 stamps per sheet

Exterior dimensions: 40.00 x 28.80 mm

Format: G - horizontal

Artist: Bolatta Silis-Høegh

Typography: Lowe-Martin Group

Printing Method: Offset

Paper: TR4



About the artist

Bolatta Silis-Hoegh was born in 1981 in Qaqortoq. As the daughter of artist Aka Hoegh and writer and photographer Ivars Silis, Bolatta comes from a home where art flourishes and is constantly evolving. As a young, versatile artist, her works most often concentrate on Greenland's cultural and ecological identity and, in addition to many other projects, Bolatta has created books, set designs and works of art.



01107558

Mini sheet: *EUROPA* 1/2
– Old toys

Value: DKK 112.50

Issue date: 13th May 2015



01107559

Mini sheet: *EUROPA* 2/2
– Old toys

Value: DKK 126.00

Issue date: 13th May 2015



01301223

Stamp booklet No. 23
EUROPA

Value: DKK 159.00

Issue date: 13th May 2015

Aviation V

We have now reached the fifth part of our popular aviation series that celebrates the civil Greenland aviation history. Two of the three stamps in this issue deal with aircraft flown by companies whose principal base is outside Greenland. They are, respectively, SAS and First Air. The aviation series is scheduled to continue to 2017 when the series will conclude with the publication of a book that brings together all the stamps in this aviation series.

De Havilland Canada DHC7

By Ole Dam, former Area Manager at Grønlandsfly

DHC7 plane, popularly known as 'Dash-7', has for more than 30 years been the 'backbone' of Greenland's air transport and has served all airports in West Greenland and Kulusuk, Mestersvig and Nerlerit Inaat in East Greenland. In addition, the Dash-7 operated routes to Iceland and Canada. The aircraft is produced by the Canadian firm DeHavilland of Canada (DHC) which, since World War II, has been known for its production of STOL aircraft to operate from very short runways (STOL = Short Takeoff and Landing). Originally there was generally just minor aircraft but, in 1972, DeHavilland began the development of the Dash-7 aircraft with seating for approximately 50 passengers. In 1978 the first aircraft was ready to be delivered to a company in the USA.

The emergence of this type of aircraft generated interest from Grønlandsfly due to the STOL characteristics, which led to the establishment of shorter aprons and thus greater opportunities to find suitable sites in Greenland. After the construction of an airport in Nuuk began in 1976, Grønlandsfly ordered two Dash-7 aircraft. The airport opened in late September 1979. Dash-7 aircraft enabled a higher standard of service on board in the form of a cabin service with the service tailored to stretch the flight time. DHC7-aircraft crew consisted of two pilots and one cabin attendant.

In September 1984 a new airport was opened in Ilulisat and, with the growing demand for capacity, a third Dash-7 was delivered in December of the same year. Subsequently Short Track airports were opened in another seven cities along the west coast of Greenland, from Qaanaaq in the north to Paamiut in the south, causing a gradual increase in the Dash-7 fleet to a total of six aircraft.

The Dash-7's became very popular and developed pas-

senger traffic in Greenland with fixed-wing aircraft and quickly became known as a stable and robust aircraft. As the years passed, however, new types of aircraft were developed. In 2011 Air Greenland acquired the first of the new type of aircraft which gradually replaced the Dash-7 which were phased-out and sold. The last three Dash-7 aircraft were sold in early 2015, leaving just the memory of the first 'real' aircraft in Greenland's domestic traffic, and of the first aircraft to make air transport the regular means of transport.

SAS Boeing B767-383ER

By Finn Øelund, former Director at Grønlandsfly / Air Greenland

During this same time the company 'SAS' also had a fleet of fourteen 'long-haul' B767 aircraft using the livery from the 'SAS' Business Mans Airline.

Jan Carlzon had been tasked to 'recreate' 'SAS' in a new lasting version and started the Business Mans Airline with this aircraft livery, while creating an organization and culture where the customer was at the center of everything. During this period, departure precision, services on board and at airports were focused upon and the company was awarded once the title 'Airline of the Year' from an international travel magazine. Jan Carlzon created an entirely new and reborn airline where employees were very loyal and supported him in all its services.

The 'Long-haul' fleet flew from Oslo, Stockholm and Copenhagen to New York and from Copenhagen to Chicago, Bangkok, Singapore, Tokyo, Rio De Janeiro, Los Angeles, Seattle and Kangerlussuaq. The route to Kangerlussuaq shared the aircraft route to Seattle and it was always the same aircraft on both routes.

In wintertime the scheduled route to Kangerlussuaq flew on Mondays, Wednesdays and Fridays and slotted around the flight schedules to Seattle. During the summertime these three flight days were supplemented with flights from other routes, so Kangerlussuaq also had flights on Tuesdays, Thursdays and /or Saturdays. This plane was very well suited for these routes and included Business Class (C-class) seats in the front two booths and Economy Class (M-Class) seats in the rear cabin.

At that time, smoking was even allowed in the cen-



01100560

Aviation V 1/3

Value: DKK 1.00

Date of issue: 13th May 2015

20 stamps per sheet

Exterior dimensions: 58.00 x 33.00 mm

Format: F - vertical

Image and engraving: Martin Möck

Printing Method: Combination

Paper: Swiss Stamp Paper



01100561

Aviation V 2/3

Value: DKK 34.50



01100562

Aviation V 3/3

Value: DKK 45.00

tral business class cabin and also in the front of the Economy cabin. The aircraft's large cargo capacity allowed it to include large quantities of fresh vegetables, milk and the like. From here came the Greenlandic concept "fly fresh vegetables". The only other transport alternative was the slow shipping and there were many people who then admitted that the most important air freight was perhaps the weekly fresh supply of "Look and Listen" and "Billed Bladet" so everyone could follow what was happening in the Danish royal family. The same type of aircraft was also used to supply the base at Thule (Pituffik). This route was flown by charter for the US Airforce once a month and included only personnel and goods to and from the base.

Boeing B727-100

By Ole Dam, former Area Manager at Grønlandsfly

In autumn 1994 collaboration was initiated between the Canadian airline 'First Air' and Grønlandsfly regarding the operation of a route between Ottawa and Kangerlussuaq with a stopover in Iqaluit / Frobisher Bay in Canada. There was a so-called pool-route where 'First Air' tabled an aircraft to Boeing B727-100 and where the two companies shared the expenses and income. The new route replaced the existing cooperation between the companies on a route between Nuuk and Iqaluit.

The service was operated with a combined passenger and cargo aircraft, which meant a significant increase in both the capacity of both passenger numbers and cargo volumes. As a starting point, the route was operated in a version with 67 seats in the rear part, and the remaining space in the cabin and cargo space was utilized for freight shipments.

The agreement between the two companies concluded further that the plane was chartered by Grønlandsfly for a flight between Kangerlussuaq and Pituffik / Thule Air Base after arrival in Kangerlussuaq. The reason was a need to travel to and from Pituffik for contract staff at the US base residing in Greenland, as well as providing a travel option for transport to and from Qaanaaq via Pituffik for residents of Qaanaaq and in the rest of Greenland.

Cooperation between 'First Air' and 'Air Greenland' continued unchanged until November 1997 when 'Air Greenland' was then granted a license to resume flights between Copenhagen and Narsarsuaq and to operate a route between Copenhagen and Kangerlussuaq. The flights were carried out with its own aircraft but, as the company at the commencement did not have aircraft or personnel, they accepted the aviation authorities' decision that the operation for the first six months could be implemented with embedded aircraft equipment. 'Air Greenland' therefore

chose to expand their cooperation with 'First Air' to include flights between Greenland and Denmark. The last flight was a purely passenger flight from Narsarsuaq to Copenhagen on 6th May 1998. From 12th May 1998 'Air Greenland' took over the flight with the newly acquired Boeing B757 aircraft, but only on the route between Copenhagen and Kangerlussuaq as the airport in Narsarsuaq was closed due to a repair of the runway. The first flight to Narsarsuaq took place on 1st June 1998.

'First Air's' Boeing B727-100 aircraft continued the original plan of operation of the route from Ottawa to Kangerlussuaq, and to Pituffik and return until 2001, when the agreement expired.

Facts about SAS Boeing B767

Boeing 767 in the original version which first flew in September 1981, and 'United Airlines' was the first customer to deploy it approximately one year later.

The version B767-300ER first flew in 1986 and was inserted into air traffic that year. 'SAS' decided to order this type of aircraft in January 1988, with the first delivery taking place in March 1989. Boeing B767-300ER at 'SAS' was a direct replacement for the Douglas DC-10-30. In total, 'SAS' was operating with sixteen B767-300ER aircraft until 2003, when it was finally phased out from 'SAS'.

Final Sale on 30th June 2015

The following stamps and philatelic products will be removed from our product range on 30th June 2015, if they have not previously been sold out. Any remaining stocks will be shredded.

Product	Title	Item no.	Issued on	Value
Stamp	Greenlandic Mining IV 2/2	01100504	14.01.2013	DKK 49.00
Stamp	EUROPA 2013/1	01100505	14.01.2013	DKK 10.50
Stamp	EUROPA 2013/2	01100506	14.01.2013	DKK 11.50
Stamp	Contemporary Art VII 1/3	01100507	14.01.2013	DKK 0.50
Stamp	Contemporary Art VII 3/3	01100509	14.01.2013	DKK 40.50
Stamp	Agriculture II 2/2	01100512	11.06.2013	DKK 29.50
Stamp	Sepac 2013	01100513	11.06.2013	DKK 11.50
Stamp	Greenlandic Herbs III 1/2	01100514	11.06.2013	DKK 8.50
Stamp	Uummannaq 250 years	01100516	11.06.2013	DKK 9.00
Stamp	Aviation III 1/2	01100521	21.10.2013	DKK 1.00
Stamp	Greenlandic Mining V 1/2	01100532	20.01.2014	DKK 10.00
Stamp	Contemporary Art VIII 1/3	01100536	11.06.2014	DKK 3.00

Product	Title	Item no.	Issued on	Value
Souvenir Sheet	Expedition X Hans Hendrik - Suersaq	01106497	22.10.2012	DKK 29.50
Souvenir Sheet	Joint issue with Israel Post 'Vulnerable Animals'	01106510	11.06.2013	DKK 19.50
Souvenir Sheet	Joint issue with Posta Nordafar	01106518	23.09.2013	DKK 22.50
Mini Sheet	EUROPA 2013/1 - Contemporary Postal Vehicles	01107505	14.01.2013	DKK 94.50
Mini Sheet	EUROPA 2013/2 - Contemporary Postal Vehicles	01107506	14.01.2013	DKK 103.50
Stamp Booklet no. 21	EUROPA 2013 - Contemporary Postal Vehicles	01301221	14.01.2013	DKK 132.00
Christmas Stamp Booklet no. 18		01301118	22.10.2013	DKK 117.00
Souvenir Folder	Contemporary Art VII	01303057	14.01.2013	DKK 43.00
Souvenir Folder	Greenlandic Herbs III	01303058	11.06.2013	DKK 36.50
Souvenir Folder	Sepac 2013	01303059	23.09.2013	DKK 120.00
Souvenir Folder	Nordafar	01303060	23.09.2013	DKK 49.50

Nuuk Gaypride

By Nuka Bisgaard, Organizer



Photo: Nuka Bisgaard ©

It is now six year ago that I sat down, as an organizer, and had a vision of a LGBT (Lesbian, gay, bisexual and transgender) environment included in Greenland.

It all started with a belief and a hope to create a country, a city, a home – a home where there is room for everyone. This was the idea behind Nuuk Gaypride. But what is a home? A home is made up of security and love. However, as a minimum, a home comprises four walls and a roof. During the time since the project began, the four walls have started to be built up. And the four walls consist of acceptance, tolerance, trust and respect. But, to build a home up without a roof is not a sustainable home. It came as a surprise when the latter part fell into place and when it was eventually found out what the roof consisted of - the political campaign.

Today we can stand tall and look back upon five successful events of Nuuk Gaypride where each event had different activities with more participating na-

tionalities. We started out with a single parade which turned out well with over 1200 participants, followed by local underground musicians. In later years, it was larger and we delivered events with DJs, singers and speakers from Denmark and a Drag Queen show directly from Las Vegas. Even local authors have been inspired to write books on the subject LGBT.

Nuuk Gaypride was an interesting topic, which evolved into touring with events which included musical selections and lectures on the coast of Greenland. Besides this, it managed to highlight Greenland in Denmark, Iceland and the Faroe Islands as having Gayprides and cultural events. Since then the West-Nordic LGBT cooperation has been created with our neighbouring Island and the Faroe Islands, and we have created our very own LGBT association, LGBT Qaamaneq. Last but not least, Nuuk Gaypride has created political debate including rights, religious marriage and adoption.

Many stones have been removed from the road in order for us to reach the communities that we have in Greenland today – a society which also includes an LGBT environment. The diversity has prevailed, for the dream of that LGBT to be able to be themselves in their own country has been made easier by that we have seen the opportunities ahead instead of the limitations.

But nothing is easy, everything is a struggle. A struggle for justice in such a large country but with such a small community. However, we can all now confirm that here there is the presence, support, love, affirmation and, not least, faith and hope of a more diverse Greenland. A desire for a future in our own country, as we are and want to be, one that we can all look back upon - is that everything eventually can become a reality if you have a dream.

Sepac 2015 – Gaypride

Julie Edel Hardenberg was born in Nuuk in 1971. She studied at the Art Academy in Trondheim, Norway until 1999. Later, in 2005, she received an MA in Art Theory and Communication from the Danish Royal Academy.

She is a versatile and highly active artist who, as well as exhibiting at numerous local and international exhibitions, has produced five books. Her works are characterized by being implemented conscious, quirky and poetic with a humorous approach to concepts such as ethnic and cultural identity.

In 2005, she was selected by the Musée de L'Elysée, Lausanne, Switzerland to be among the 50 most promising young photographers in the world. In addition, she was nominated for the Nordic Council Literature Prize in 2006 for her photo art book 'The silent diversity', Milik Publishing. Her book 'ABCT', Milik Publishing, was nominated in 2007 as the year's best book work by the Danish book craftsmanship association and she was also nominated for the West Nordic Children's Literature prize in 2008. Julie was nominated for the Liviafondens prize in 2009. In the justification it was said, "her works have a conflict solving effect".

Julie is married to Svend Hardenberg. Together they have three children.

During the last 9 years, Julie has designed 11 stamps for POST Greenland. Julie says about her new stamp:

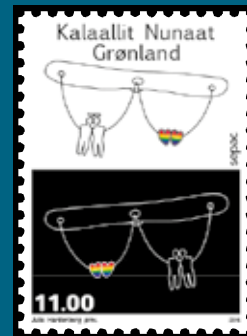
Love is a human right!

Being true to oneself is the best foundation for a good life. We all experience love and seek it when we need it, because it is a prerequisite for a good life.

With this stamp, I hope to broaden our concept of diversity and our understanding of that love between two people is not necessarily limited to a particular combination of sex. To fall in love with other people, without distinction of sex or other particular condi-

tions - that is precisely what makes the infatuation and love a strong and life-giving force in the world.

As a theme for the stamp I have chosen the Greenland Toys 'Pulaartut', because it demonstrates that you need also your mind to be successful in love. We all do well to let the love grow and to embrace life.



01100565

Sepac "Pearls of Europe" (Gaypride)

Value: DKK 11.00

Date of issue: 13th May 2015

40 stamps per sheet

Exterior dimensions: 28.80 x 40.00 mm

Format: G - vertical

Artist: Julie Hardenberg

Typography: Lowe-Martin Group

Printing Method: Offset

Paper: TR4



News from POST Greenland

Fair and exhibition participation

Up until the end of September 2015 POST Greenland will participate in:

- '25. Internationale Briefmarken-Messe', Essen, 7th – 9th May
- 'EUROPHILEX', London, 13th – 16th May
- 'World Philatelic Exhibition', Singapore, 14th – 19th August
- 'SILFI 2015', Silkeborg, Denmark, 26th – 27th September

For these exhibitions a Greenlandic special cachet will be made. Envelopes for cancelling with this date stamp are to be sent so as to have arrived at POST Greenland, Filatelia the day before the respective exhibition.



The 2010 London Exhibition, which also took place in Business Design Centre, Islington.



Read next time...

In the next issue of Greenland Collector, published in September 2015, you can read about:

- Sepac Souvenir Folder 2015
- Architecture in Greenland
- Renewable energy
- Final sale on 30th November 2015
- 2015 Christmas stamps
- 2015 Christmas ornaments
- 2015 Year Pack
- And much more...



Worth knowing

Please send your orders / amendments to:

POST Greenland, Filatelia
P. O. Box 121, 3913 Tasiilaq, GREENLAND
Telephone: (0045) 70 26 05 50 and (00299) 98 11 55
Fax: (00299) 98 14 32
Email: stamps@telepost.gl

Any change in name, address and/or subscription must be received by POST Greenland, Filatelia, no later than 5 weeks prior to a stamp issue.

NOTE

Please do not write your order on a giro transfer form as these are processed electronically.

How to pay

On the payment – please make sure you always state your name and your customer number. Your payments can be made by **giro** to one of the accounts mentioned below, by credit card, by international reply coupon or by cash in Danish Kroner, Euro or US Dollars only. *It is no longer possible to pay by cheque.*

Automatic credit card charge:

You can sign up for an automatic credit card charge from POST Greenland, Filatelia if you wish to use your credit card as payment when you buy stamps or when receiving your subscription. If you sign up to this new credit card service, the total amount will automatically be deducted each time we send your order or subscription shipment to you.

All you have to do is create a user account at www.stampsshop.gl, select the menu 'Account' and follow the instructions. Then we will charge the amount to your credit card, when we send the items to you.

NOTE:

- If you have a debit balance, you need to pay this outstanding amount before the automatic credit card charge will be activated.
- If you get a new credit card, credit card number, expiry date or CVC-number, please delete your automatic credit card charge on www.stampsshop.gl and sign up again with the new information.

Instructions can be found on www.stamps.gl -> About Filatelia -> Payment methods.

GIRO BANK TRANSFER

Denmark: Danske Bank, Holmens Kanal 2-12, 1092 København K. Account No.: 9541 - 940 4120.
IBAN: DK98 30000009404120, BIC (SWIFT code): DABADKKK

Sweden: Postgirot Bank AB (publ), Vasagatan 7, 105 06 Stockholm. Account No.: 41 45-9.
IBAN: SE979500099602600041459, BIC (SWIFT code): NDEASESS

Norway: Postbanken, Kunderegister Bedrift, 0021 Oslo.
Account No.: 7878.06.55312

IBAN: NO44 78780655312, BIC (SWIFT code): DNBANOKK

Germany: Postbank, Niederlassung Hamburg, Überseering 26, 22297 Hamburg.
Account No.: 541414200 BLZ 200 100 20.
IBAN: DE03 2001 0020 0541 414200, BIC (SWIFT code): PBNKDEFF

Credit card:

MasterCard, VISA, JCB, Dankort, VISA Electron, Maestro.

We kindly ask you to use one of the methods below:

- the order form
- pay through www.stampsshop.gl
- sign up for the automatic credit card charge on www.stampsshop.gl

Instructions can be found on www.stamps.gl -> About Filatelia -> Payment methods.

Cash:

Only banknotes in Danish kroner (DKK), euro (EUR) or US dollar (USD) are accepted and must be sent by registered mail.

Postal order IRC (IBRS):

International reply coupons: Value DKK 14.00 each.

One-year deadline for complaints

Any complaint concerning stamps or philatelic items purchased from POST Greenland must reach POST Greenland, Filatelia, no later than one year from the last day of the month in which the items were despatched. The date of the postmark, or possibly the invoice, indicates the date of despatch.

Fees for registered letters and parcels despatched from Greenland

The fee for registered letters within Greenland or to Europe (including Denmark and the Faroes) is DKK 95.00. e.g.: Postage for a registered letter stamped with DKK 12.50 (max. 20 g.) amounts to DKK 107.50. For the postage charges for mail to other overseas countries, see: www.stamps.gl.

Handling Fee

Subscription deliveries will be charged a handling fee of DKK 10.00. Other order deliveries, e.g. all orders received by phone, fax, email or letter, will be charged a handling fee of DKK 15.00. **Online orders**

placed through our website www.stamps.gl are **FREE** of charge.

Net payment within 30 days

Payment of our invoices is to be made within 30 days from the date of the invoice.

Please note that the registration of your payments will take approximately two weeks or more. Therefore, you may receive an invoice with a balance which does not include your recent payments.

Exchange of stamps

POST Greenland, Filatelia, exchanges only unused stamps for new stamps of the customer's choice. No more than 3 exchanges free of charge at maximum DKK 100.00 each, per customer, per year are permitted. When exceeding a total of 3 x DKK 100.00, POST Greenland, Filatelia, will charge a fee of 45% of the nominal value.

The fee of 45% must always be paid in cash and is not payable by other stamps. The maximum annual value of unused stamps for exchange per customer must not exceed DKK 50,000 in nominal value.

For further information, please contact POST Greenland, Filatelia.

Handling fee on cancellations of old stamps

For each received batch of stamps for cancellation by POST Greenland, Filatelia a fee of DKK 15.00 will be charged. The amount can be paid by the payment methods listed on this page.

www.stamps.gl

On www.stamps.gl it is possible to gain much information about Greenlandic stamps. You may read Greenland Collector, sign up for our newsletter, read last news, buy stamps, participate in competitions, administrate your account and your subscription etc..

All information about prices, fees etc. is subject to printer's errors.

Publisher: POST Greenland

Editors: Kristian Sakæussen, Kristian "Karé" Pivat, Volker Nitschmann, Peder Friis Sørensen, Hjørdis Viberg.

Chief Editor: Pertti Frandsen.

Layout: DAMgrafisk.dk

Printing: DAMgrafisk.dk

Front page photo: Mads Pihl

We are the people you reach, whenever you write, fax, e-mail or telephone POST Greenland, Filatelia.

We look forward to offering our continued assistance with your philatelic enquiries.



Kristian Sakæussen
Trainee
Greenlandic, Danish



Carsten Meier
Sales Assistant
German, English, Danish



Volker Nitschmann
Sales Assistant
German, English, Danish



Kristian "Karé" Pivat
Senior Clerk
Greenlandic, Danish



Peder Friis Sørensen
Customer Services Manager
Danish, English, German, Spanish



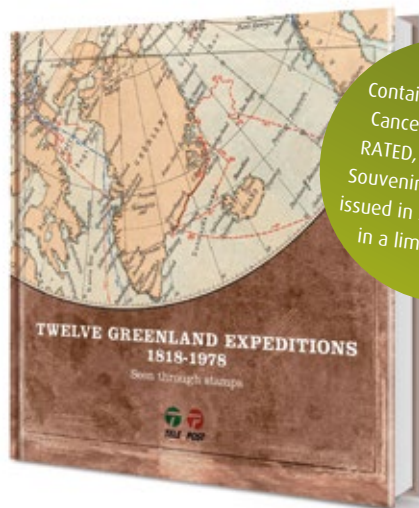
Hjørdis Viberg
Administrative Manager
Faroese, Danish, English, German



Pertti Frandsen
Philatelic Manager
Danish, English, German

Return to:
POST GREENLAND
FILATELIA
PO BOX 121
3913 TASIILAQ
GREENLAND

You can still buy the expeditions book 'Twelve Greenland Expeditions 1818-1978' containing all twelve souvenir sheets from the series



Contains one First Day Cancelled, UNPERFORATED, 75 Year Jubilee Souvenir Sheet that was issued in September 2013 in a limited number.

This illustrated book relates the fascinating story of the twelve Greenland Expeditions 1818 - 1978 in POST Greenland's Expedition Series 2003 - 2014.

The book comprises 84 pages and includes all 12 souvenir sheets in the series, date stamped with the first day cancellation. In addition, the book contains one imperforate 75th anniversary souvenir sheet which was issued in a limited edition in September 2013.

The book is published in four separate languages. Choose between Greenlandic, Danish, English or German.

Price DKK 249.00 + DKK 50.00 shipping costs.

Order it here: www.stamps.gl or contact our customer services.

Description/Subscription codes with themes

If you take out a subscription to a product with a theme, then remember to attach a theme from the list below to the subscription creation

100	Single stamps with theme	The number of stamps per half sheet varies, e.g. 50, 25, 20 or 10 pcs.
101	Blocks of four with theme	The number of stamps per whole sheet varies, e.g. 100, 50, 40 or 20 pcs.
102	Half sheets with theme	Upper marginal blocks of four.
103	Whole sheets with theme	Lower marginal blocks of four.
104	Upper marginals with theme	Including 1 to 4 stamps of an issue or a series.
105	Lower marginals with theme	Including 8 like stamps
106	Souvenir sheets with theme	First day covers franked with one stamp, cancelled.
107	Mini sheets with theme	First day covers franked with a block of four, cancelled.
201	FDC/1 with theme	First day covers franked with one of each stamp of a series, cancelled.
202	FDC/4 with theme	First day covers franked with a souvenir sheet, cancelled.
203	FDC/Series with theme	Booklets containing two blocks of 4 to 6 stamps each.
204	FDC/Souvenir sheets with theme	Complete series of stamps inserted in an illustrated folder.
301	Stamp Booklets with theme	Postcards pertaining to the stamp design franked and cancelled with a first day cancellation on the picture side.
303	Souvenir Folders with theme	Ordinary postcards pertaining to philately. Note: Same design as maxicard.

Themes

Theme Id Theme

1 Europa · 2 Royal · 3 Transportation · 4 Nature · 5 Science · 6 Art · 7 Anniversary / Event · 8 Intaglio

Description/Subscription codes for sets

610	Single stamps in set	
611	Blocks of four in set	Blocks of four like connected stamps.
612	Half sheets in set	The number of stamps per half sheet varies, e.g. 50, 25, 20 or 10 pcs.
613	Whole sheets in set	The number of stamps per whole sheet varies, we.g. 100, 50, 40 or 20 pcs.
614	Upper marginals in set	Upper marginal blocks of four.
615	Lower marginals in set	Lower marginal blocks of four.
616	Souvenir sheets in set	Including 1 to 6 stamps of an issue or a series.
617	Mini sheets in set	Including 8 like stamps
621	FDC/1 in set	First day covers franked with one stamp, cancelled.
622	FDC/4 in set	First day covers franked with a block of four, cancelled.
623	FDC/Series in set	First day covers franked with one of each stamp of a series, cancelled.
624	FDC/Souvenir sheets in set	First day covers franked with a souvenir sheet, cancelled.
205	FDC/1 Year Set	A whole year's FDC/1.
631	Stamp Booklets in set	Booklets containing two blocks of 4 to 6 stamps each.
633	Souvenir Folders in set	Complete series of stamps inserted in an illustrated folder.
304	Year Pack	A whole year's issue of stamps plus souvenir sheets inserted in an illustrated folder. Note: Stamp booklets not included.
520	DAVO pages	Extra pages "GREENLAND" with mounts, for DAVO luxury albums.
700	Franking labels	
701	FDC/1 Franking labels	
702	FDC/Series Franking labels	

Key to variants

- 0 Mint (i.e. uncanceled) stamps, blocks of four, etc.
- 1 Stamps, etc., cancelled with ordinary day cancellation on issue date, mounted on cardboard.
- 2 Stamps, etc., cancelled with ordinary day cancellation on issue date.
- 3 Stamps, etc., cancelled with first day cancellation. mounted on cardboard.
- 4 Stamps, etc., cancelled with first day cancellation.
- 5 Stamps, etc., centre cancelled with ordinary day cancellation on issue date.
- 6 Stamps, etc., centre cancelled with first day cancellation.

Maxi Cards and Postcards are no longer part of our product range

Maxi Cards and Postcards were deleted from our range as of 31st December 2014. The reason is that we have too few subscribers to these collectibles. Exhibition Cards were also deleted from our range as of 31st December 2014.